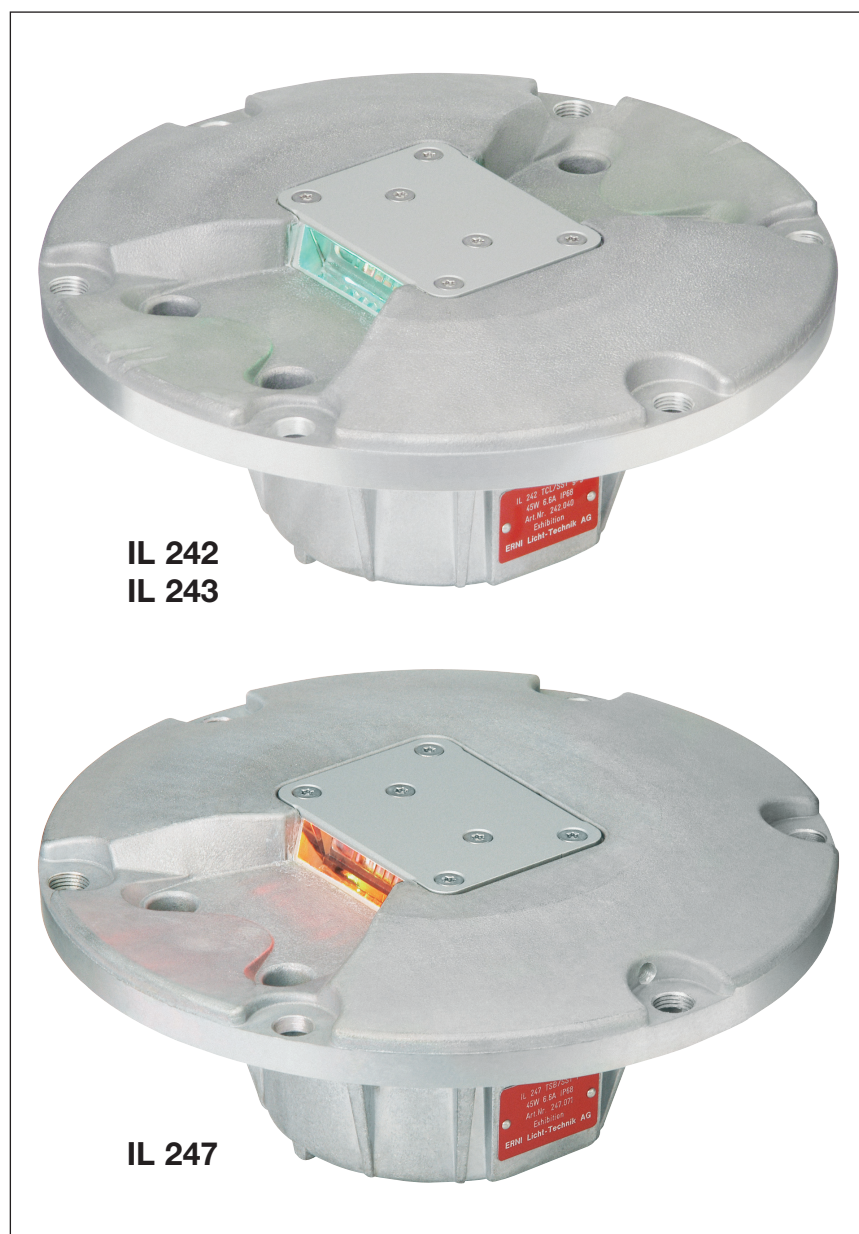


## TAXIWAY/APRON

Inset Light – High Intensity – Uni- and Bidirectional

**IL 240** **10"**



**IL 242**

**IL 243**

**IL 247**

### **IL 242-TCL**

Taxiway Centreline  
bidirectional

### **IL 243-TCL**

Taxiway Centreline  
bidirectional, dual lamp type,  
directionally switchable

### **IL 247-TCL**

Taxiway Centreline  
unidirectional

### **IL 247-TSB**

Taxiway Stopbar  
unidirectional

## Features

- main applications:
  - TCL taxiway centrelines
  - TSB stop bars
  - TCB clearance bars
  - RXC rapid exit centrelines
- low energy consumption
- very sturdy aluminium housings of long term tightness (IP68)
- housing substructures 10"
- elevation above ground 10 mm
- optimal prism protection
- lamp system can be chosen or adapted easily:
  - prefocussed halogen lamp, socket PK30d, rating 6.6A, life expectancy 5'000 hrs using mixed intensity steps (at rated current: 1'000 hrs nom.)
  - halogen cold mirror reflector lamps of 48W life expectancy 1'500 hrs at rated power
- dichroic colour filters
- no optical adjustments needed after maintenance operations
- vulcanised plug, cable length 30 cm

## General

The lights of the series IL 240 meet the guidelines of ICAO Annex 14 as well as Part 4 of the Aerodrome Design Manuals and are in compliance with IEC 61827. They are suitable for taxiway systems at operating levels of category I to III as lights for rapid exit- and taxiway centrelines, stop- and clearance bars and aprons.

## Light characteristics and performance

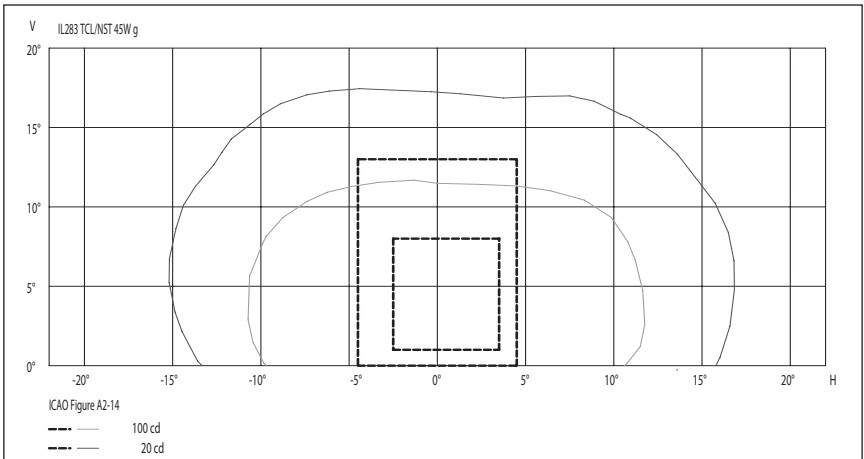
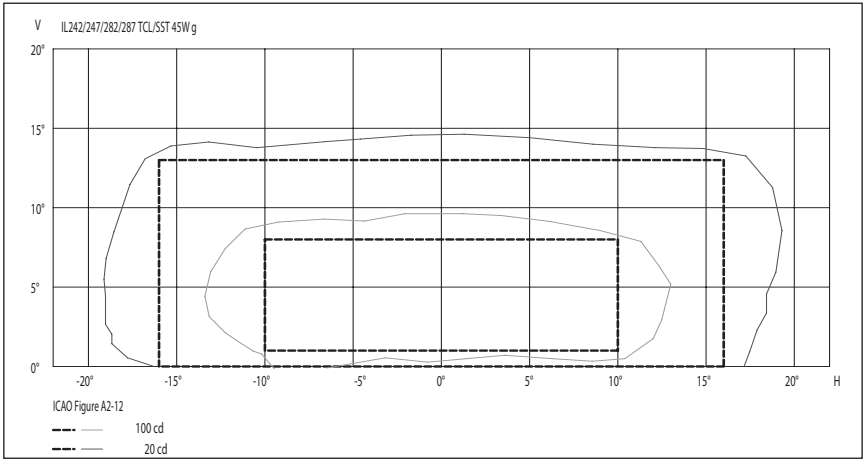
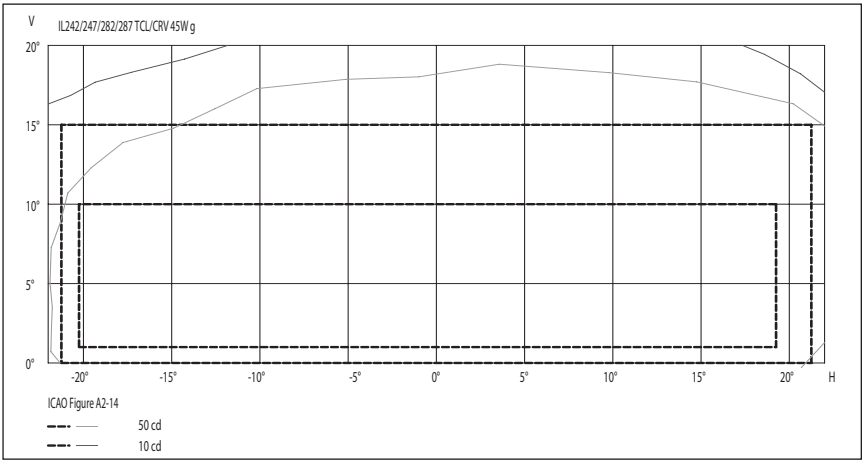
The typical nominal values apply to single lamp lights with aluminium reflectors and lamps with socket PK30d. For dual lamp lights (IL 243) and lamp socket PK30d the tabular values are about 15% higher, the 45W tabular values are about 150% higher

when using 48W reflector lamps for each beam direction. The light distribution is slightly more broad-beamed with reflector lamps. For all lamp systems intensity variations are smaller than 3:1 in the main beam.

### Ordering colour code and light transmittance

□	w = white	100 %
■	g = green	45%
■	y = yellow	55%
■	r = red	25%

## Isocandela diagram



### Characteristic for CRV-Optic

Table of ERNI average PK30d Halogen lamps			
cd	red	green	yellow
45 W	60	110	130
65 W	110	200	240
100 W	180	350	420

### Characteristic for SST-Optic

Table of ERNI average PK30d Halogen lamps			
cd	red	green	yellow
45 W	120	220	270
65 W	230	410	500
100 W	430	800	970

### Characteristic for NST-Optic

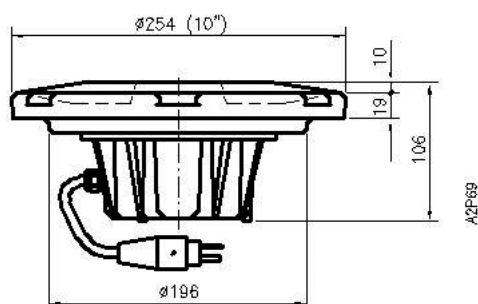
Table of ERNI average PK30d Halogen lamps			
cd	red	green	yellow
45 W	270	500	600
65 W	500	900	1'100
100 W	810	1'530	1'850

## Dimensions/Weights

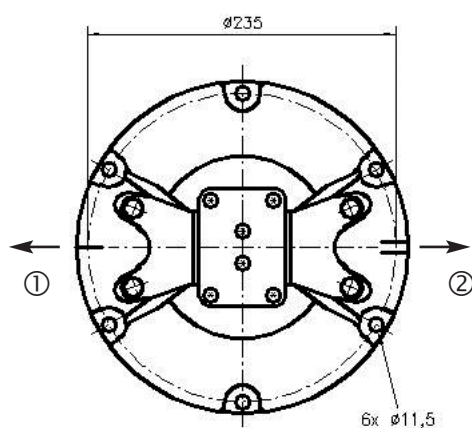
The lamp housings of the series IL 240 fit into substructures according to FAA AC 150/5345-42C, size L-868A (10").

Size 12" (size L-868B) and special dimensions on request.

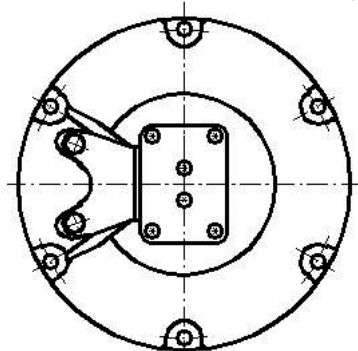
Article	Weight	Packing (cardboard box)
IL 242	4,0 kg	255 x 255 x 107 mm
IL 243	4,0 kg	255 x 255 x 107 mm
IL 247	4,1 kg	255 x 255 x 107 mm



Fixing perforations according to FAA or customer specifications



**Type IL 242-TCL/SST-45 W-g/g**



**Type IL 247-TCL/SST-45 W-g**  
for straight sections

**Type IL 247-TSB/SST-65 W-r**  
for stop bars

- ② 2nd lightbeam colour
- ① 1st lightbeam colour

---

## Options

- 45W, 65W or 100W PK30d halogen lamps
- optics for NST, SST and CRV
- colour filters mass-dyed
- directionally switchable (type IL 243) either 2 x 45W PK30d halogen lamps or 2 x 48W cold mirror reflector lamps
- drain holes in the light channel
- all 10" light fixtures are also available in 12" size with the same features and options.
- electronic cut-out device
- lamp fixing perforations according to customers request
- customized dimensions and other options upon request

## Accessories

Accessories must be ordered separately. For details see also section «mounting systems». Substructures and series transformers to be ordered separately.

Subject to change