

SHALLOW BASE

12"

For Inset Lights



Shallow Base 12" FAA

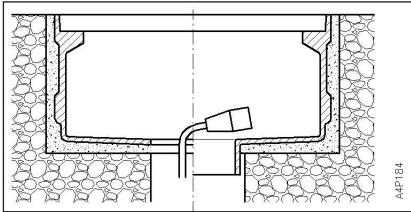
Standard shallow base type with flat bottom and socket piece or watertight design

General

ERNI shallow bases are designed for installation of inset lights in flexible and non flexible pavements by means of the glue-in or epoxy method. The shallow bases are made of high-quality aluminum alloy to prevent galvanic reactions and corrosion. The bases may be provided with earthing capability.

Wet- and Dry-System

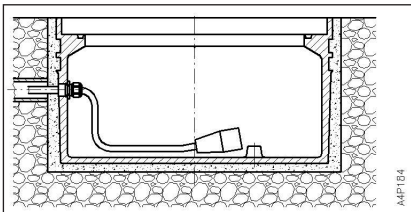
For wet systems, shallow bases are available with a central 106 mm hole. The base is either of a flat bottom design or with a socket piece.



Standard shallow base type
with flat bottom and socket piece



For dry systems, one-piece waterproof shallow bases with an O-ring groove and one or two lateral entries for the cable are available. Cable entry is made with watertight PG cable glands. Upon request the base is equipped with a 0.5 m length pigtail with a FAA L-823 receptacle. The opposite end of the cable allows an easy crimping connection to the secondary wires within the saw cuts.



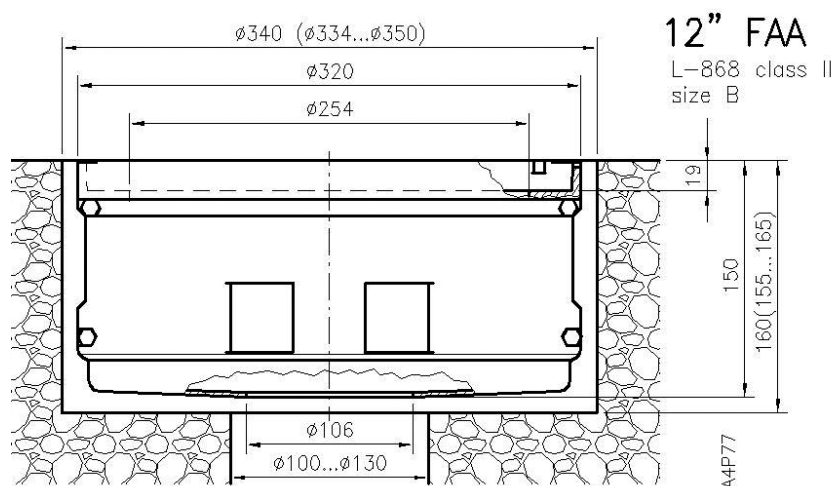
Dimensions/Weights

ERNI 12" shallow bases are packed individually or multiple bases in cardboard boxes.

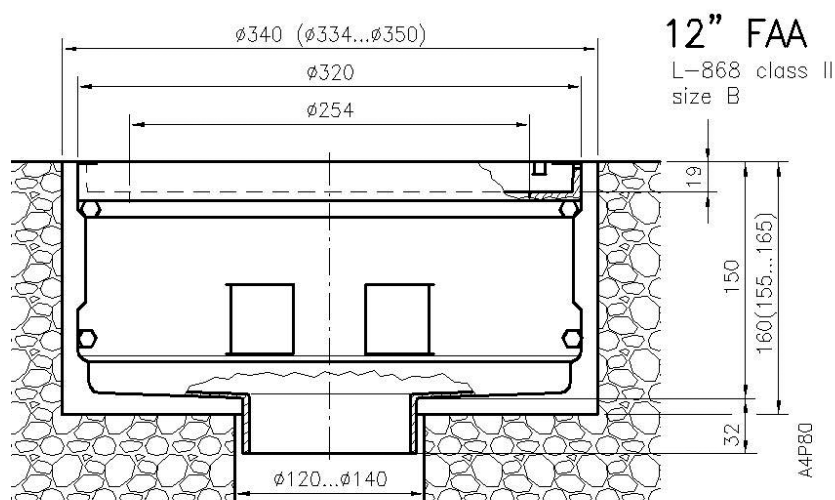
| Article | Weight |
|----------|--------|
| ED12-190 | 4,3 kg |
| EE12-190 | 4,8 kg |

Installation

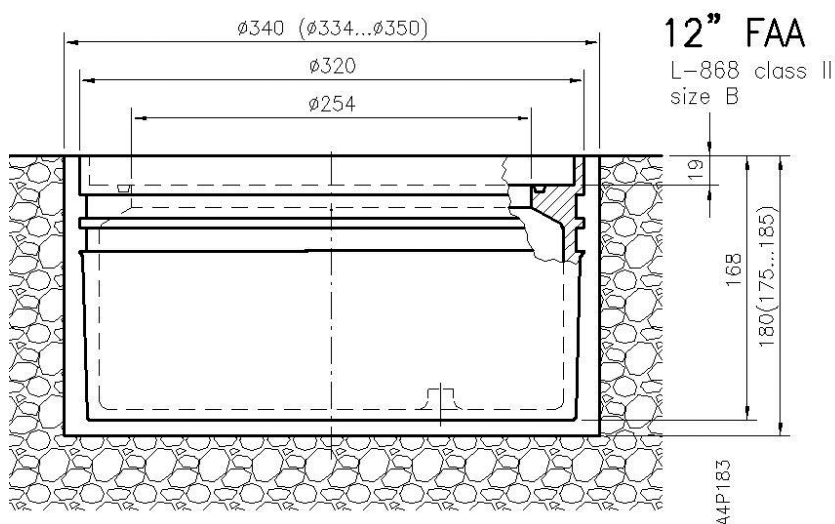
Shallow bases are sealed by means of an appropriate resin that maintains a certain flexibility after having cured. A dedicated installation jig allows correct positioning and leveling of the base. The secondary cable between the light and isolating transformer passes through cable conduits (tubes) and a vertical cable entry into the shallow base. An alternative method is to lay the cable in saw cuts (kerfs) filled with resin. The inset light or cover will be fastened with 6 screws. **Fastening torque for lubricated screws is 25 Nm to max. 30 Nm.**



ED12 without Socket



ED12 with Socket



EE12 watertight

Accessories

Wooden covers are available for temporary installations as well as blind aluminum and steel covers for a durable installation in areas with over-rolling traffic.

Subject to change

ERNI Licht-Technik AG, Stationsstrasse 31, CH-8306 Brüttisellen, Switzerland
Phone +41 (0)44 835 33 43, Fax +41 (0)44 835 33 42

info@erniairlight.com



www.erniairlight.com