

SHALLOW BASE

8"

For Inset Lights



Shallow Base 8"

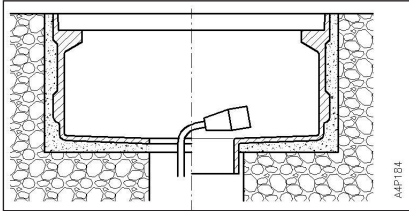
Standard shallow base type with flat bottom and socket piece or watertight design

General

ERNI shallow bases are designed for installation of inset lights in flexible and non flexible pavements by means of the glue-in or epoxy method. The shallow bases are made of high-quality aluminium alloy to prevent galvanic reactions and corrosion. The bases may be provided with earthing capability.

Wet- and Dry-Systems

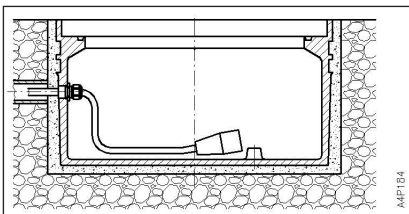
For wet systems, shallow bases are available with a central 100 mm hole. The base is either of a flat bottom design or with a socket piece.



Standard ED08 shallow base type
with flat bottom and socket piece



For dry systems, one-piece waterproof shallow bases with one or two lateral entries for the cable are available. Cable entry is made with watertight PG cable glands. Upon request the base is equipped with a 0.5 m length pigtail with a FAA L-823 receptacle. The opposite end of the cable allows an easy crimping connection to the secondary wires within the saw cuts. For IL 258 omnidirectional inset lights, ES08-190 shallow base with O-ring groove are available. However, this shallow base is not suitable for IL 254R, IL 270 and IL 280 series inset lights. For these types the EE08-190 is suitable.



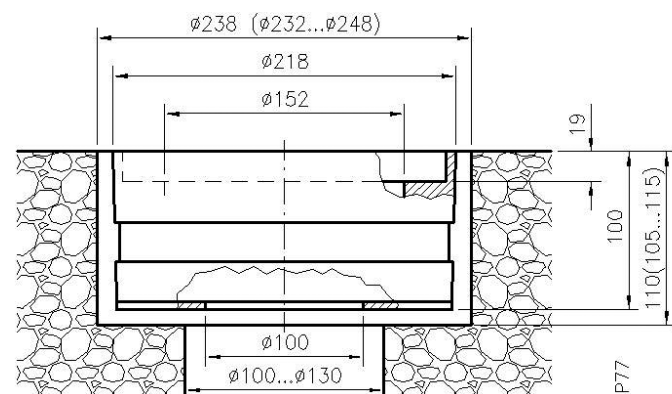
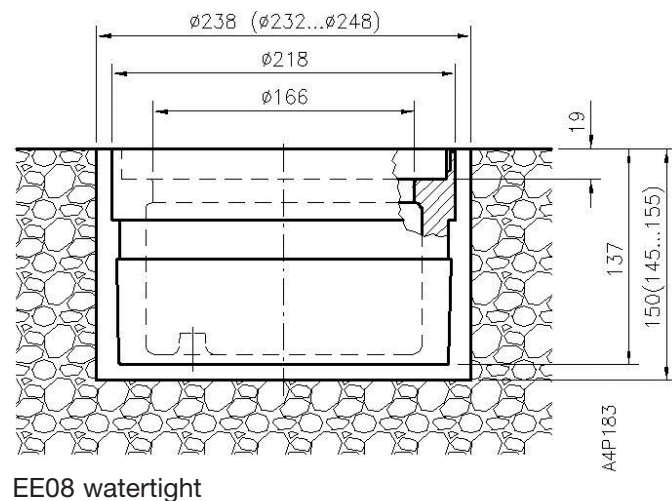
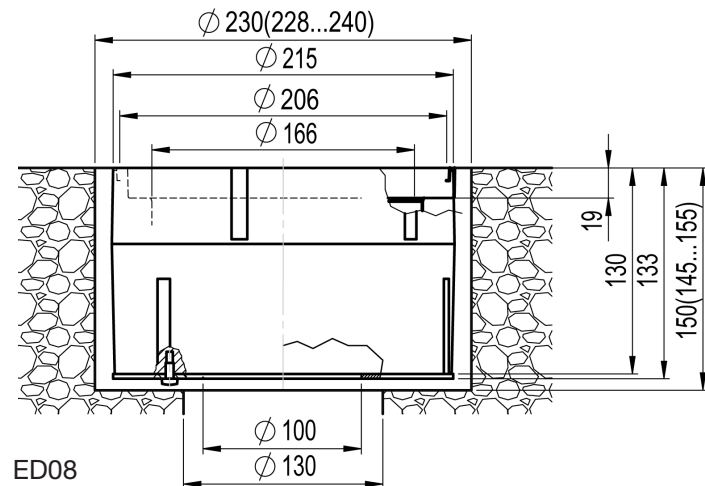
Dimensions/Weights

ERNI 8" shallow bases are packed individually or multiple bases in cardboard boxes.

Article	Weight
ED08-190	2,2 kg
ES08-190	2,7 kg
EE08-190	2,7 kg

Installation

Shallow bases are sealed by means of an appropriate resin that maintains a certain flexibility after having cured. A dedicated installation jig allows correct positioning and leveling of the base. The secondary cable between the light and isolating transformer passes through cable conduits (tubes) and a vertical cable entry into the shallow base. An alternative method is to lay the cable in saw cuts (kerfs) filled with resin. The inset light or cover will be fastened with 2 or 4 screws. **Fastening torque for lubricated screws is 25 Nm to max. 30 Nm.**



ES08 with flat bottom for IL 258 only

Accessories

Wooden covers are available for temporary installations as well as blind aluminum and steel covers for a durable installation in areas with over-rolling traffic.

Subject to change

ERNI Licht-Technik AG, Stationsstrasse 31, CH-8306 Brüttisellen, Switzerland
Phone +41 (0)44 835 33 43, Fax +41 (0)44 835 33 42

info@erniairlight.com



www.erniairlight.com