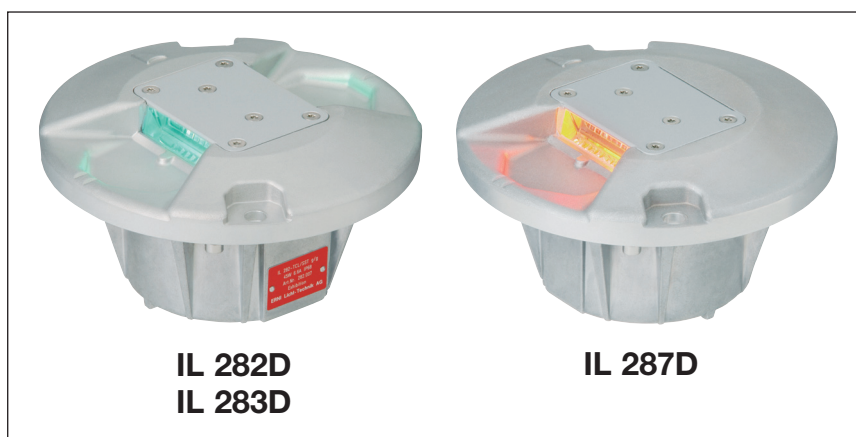


TAXIWAY/APRON

LED Inset Light – High Intensity – Uni- and Bidirectional

IL 280D 8"



**IL 282D
IL 283D**

IL 287D

General

LED inset lights of series IL 280D meet the guidelines of FAA and ICAO Annex 14 as well as Part 4 of Aerodrome Design Manuals. These light fixtures are in compliance with IEC 61827. They are suitable for high and medium intensity applications on taxiway and apron systems at an operating level of category I to III including applications for stopbars, clearance bars and docking positions.

LED lights are characterized by their low energy consumption and extremely reduced necessity of lamp changes. Lifetime of an LED is far over 100'000 hours under normal operating conditions.

Features

- fail-open function
- connection and operation fully compatible with 2.8A to 6.6A airfield lighting series circuits
- fully dimmable according to standard CCR steps
- extremely reduced maintenance due to:
 - > LED technology
 - > seal tight housing concept (protection grade IP 68)
 - > scratch-free prism
- saturated LED colors, no filters required
- interchangeable top parts with ERNI light fixtures series IL 240 and IL 280
- low energy consumption: approx. 10 to 15 VA per side
- lifetime of LED: approx. 100'000 hours under average operating conditions
- built-in surge protection
- conducted and radiated emission as per CE EMC regulations
- available in FAA sizes 10" and 12" (IL 240D series)
- seal-tight housing concept including prisms and lenses for long term tightness
- elevation above ground 10 mm
- optimal prism protection prevents from mechanical damage
- connection cable length 30 cm, L-823 with vulcanised plug

IL 282D-TCL

Taxiway Centerline
bidirectional

IL 283D-TCL

Taxiway Centerline
bidirectional
directionally switchable

IL 287D-TCL

Taxiway Centerline
unidirectional

IL 287D-TSB

Taxiway Stopbar
unidirectional

Other main functions

Clearance Bar
Docking Position
Intermediate Holding Position

Light characteristics and performance

The color is directly given by LED light output.
This means no energy losses or color shifts, no filters needed.

Ordering colour code

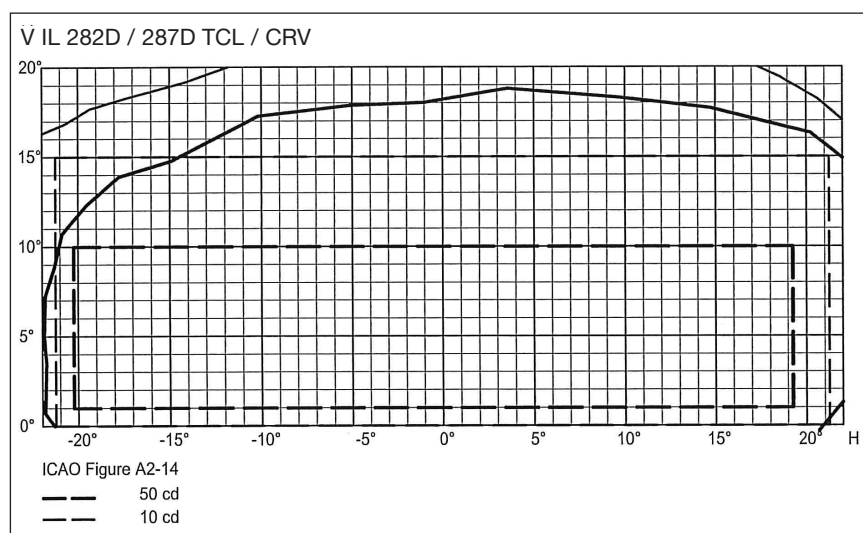
- g = green
- y = yellow
- r = red

Technical data

Low energy consumption:

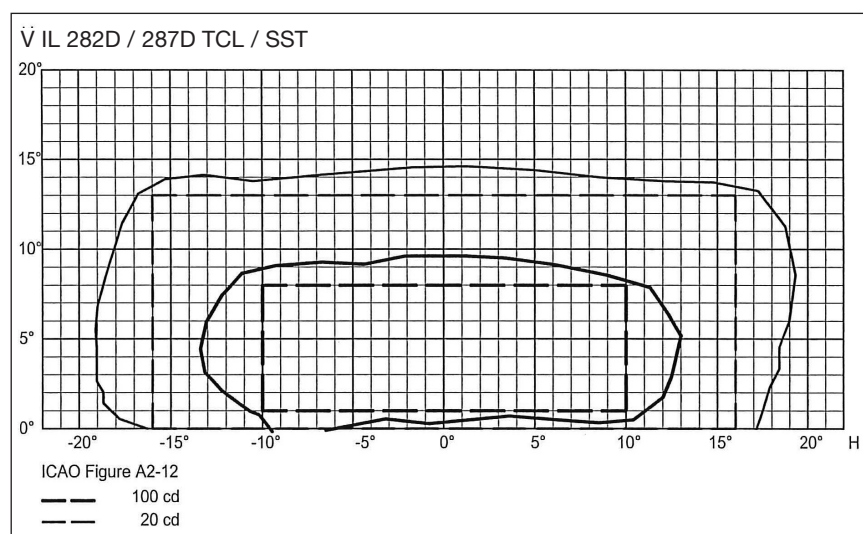
- approx. 10VA per side @ 6.6A without fail-open function
- approx. 15VA per side @ 6.6A with fail-open function

Isocandela diagram



Characteristic for CRV-Optic

Table ERNI average / LED		
green	yellow	red
150 cd	150 cd	150 cd



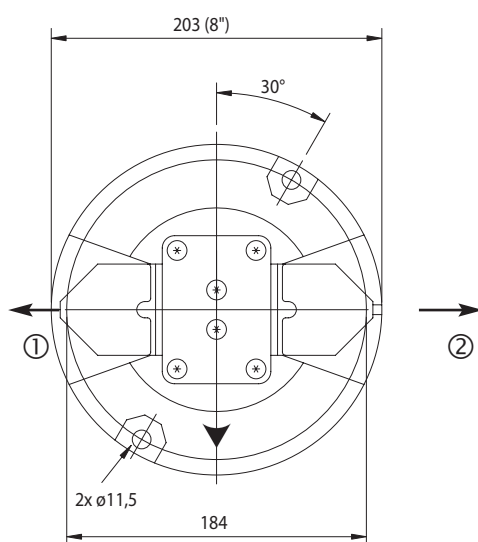
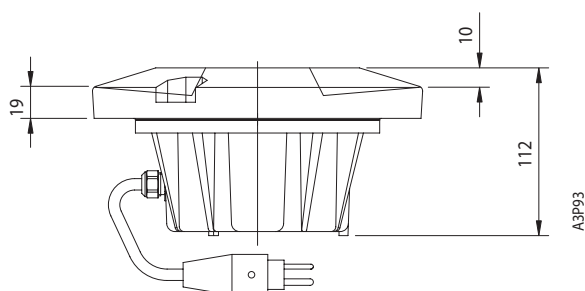
Characteristic for SST-Optic

Table ERNI average / LED		
green	yellow	red
300 cd	300 cd	300 cd

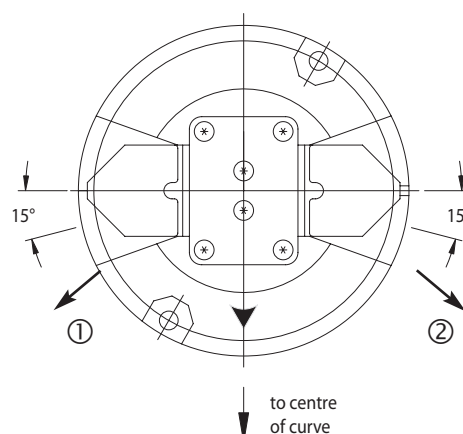
Dimensions/Weights

Lamp housing of LED series IL 280D fit into 8" substructures or substructures according to FAA AC 150/5345-42C, type L-868B (12") with Adapter Ring.

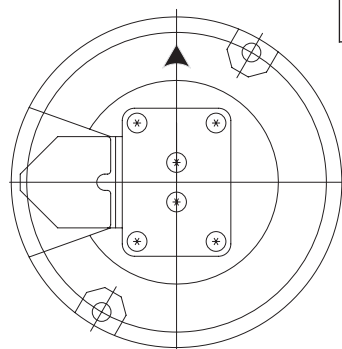
Article	Weight	Packing (cardboard box)
IL 282D	3,6 kg	203 x 203 x 112 mm
IL 283D	3,6 kg	203 x 203 x 112 mm
IL 287D	3,2 kg	203 x 203 x 112 mm



Type IL 282D-TCL/SST-g/g



Type IL 282D-TCL/CRV-g/g



Type IL 287D-TCL/SST-g
for straight sections

Type IL 287D-TSB/SST-r
for stop bars

② 2nd lightbeam colour

① 1st lightbeam colour

left curve

right curve

Options

- Scratch-free prism. Long life and easy cleaning
- Drainage
- Four screw fixation
- Light fixing perforations and dimensions according customers requirements

Accessories

Accessories must be ordered separately. For details see also section "mounting systems". Substructures and series transformers to be ordered separately.

Subject to change