

RUNWAY

Elevated Light – High and Medium Intensity – Bidirectional

EL 220



EL 225-REH and REM

Runway Edge
high and medium intensity

EL 225-THR/RWE

Threshold/Runway End
medium intensity

EL 225-APM

Simple Approach
medium intensity

Features

- sturdy, compact and tight aluminium housing (IP67)
- optimal light performance with long lamp life due to excellent heat dissipation and seal tight concept
- no optical re-adjustments after lamp change and maintenance
- easy to clean and stain-resistant
- quick relamping without tools, low energy consumption, long lamp life
- outer dome made of thermal-shock resistant clear glass and fresnel type inner lenses
- bidirectional light beam with omnidirectional guidance
- suitable for frangible pedestal type STF-N30
- suitable for frangible and adjustable pedestal type STR-N30
- standard length of connecting cable is 30 cm. Other dimensions are available as per customer specific requirements

General

The lights of Series EL 225 meet the guidelines of ICAO Annex 14 as well as Part 4 of the Aerodrome Design Manuals and are in compliance with IEC 61827. They are suitable for high intensive runway edge applications up to category III for 45 m to 60 m wide runways as well as for medium intensity applications. The EL 225 is an omnidirectional elevated light consisting of a clear outer glass dome with plain or bicolor fresnel type inner lenses. The optical concept of the glass dome produces high intensity bidirectional light beams with a toe-in of $3,5^{\circ} \div 4,5^{\circ}$. The light fixture is available with a PK30d halogen lamp in 45W, 65W, 100W or 150W variations. Life expectancy of these halogen lamps is approximately 5'000 hours under average operating conditions.

Light characteristics and performance

Ordering colour code and light transmittance

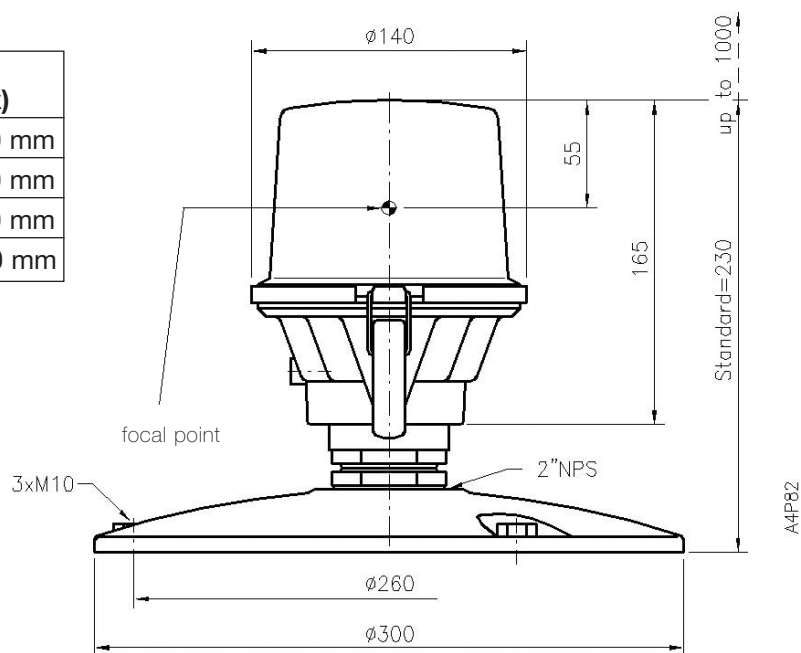
□	w = white	100%
■	g = green	20%
■	y = yellow	50%
■	r = red	20%
□	s = blind	0%

Main beam light distribution according to ICAO Annex 14

Light type/ Application area	Halogen lamps PK30d, 6.6A	Average light intensity	Light colour
EL 225-REH Runway Edge (45/60m)	150 W	ICAO 10'000/4'000 ERNI 13'000/6'000 App. 2 Fig. 2.9/10	white, yellow and red
EL 225-THR/RWE Threshold/ Runway End	150 W	ERNI 2'300/1'800 medium intensity	green and red
EL 225-APM Approach	100 W	medium intensity	white

Dimensions/Weights

Article	Weight	Packing (cardboard box)
Light EL 225	2,2 kg	155 x 145 x 190 mm
Pedestal STF-N30	0,2 kg	100 x 100 x 100 mm
Pedestal STR-N30	0,7 kg	150 x 150 x 170 mm
Base plate	2,4 kg	315 x 315 x 60 mm



Options

- yellow painted housing

Accessories

Accessories must be ordered separately. For details see also section «mounting systems».

Subject to change

